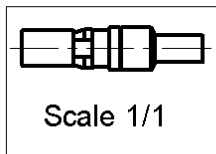
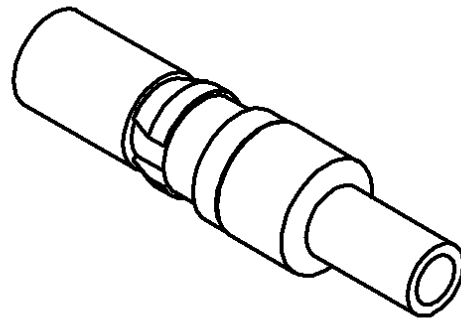
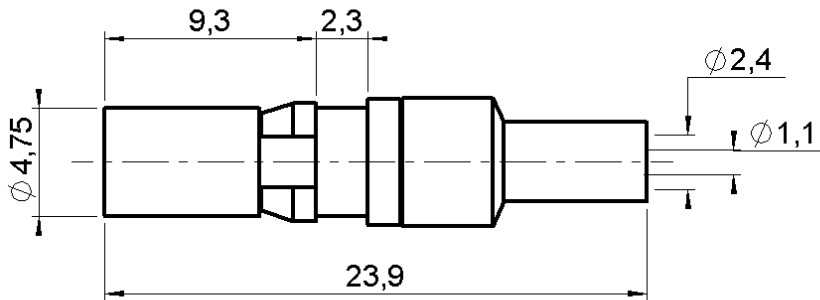


**CLIP-ON STRAIGHT PLUG CRIMP TYPE**

**R120.065.500**

**CABLE 2/50 S**

Series : DIN 41626



All dimensions are in mm.



COMPONENTS	MATERIALS	PLATINGS (µm)
BODY	BRASS	GOLD 0.5
CENTER CONTACT	BRASS	GOLD 1.3
OUTER CONTACT	BERYLLIUM COPPER	GOLD .
INSULATOR	PTFE	
GASKET	-	-
OTHERS PARTS	-	-
-	-	-
-	-	-

Issue : 0344 B

In the effort to improve our products, we reserve the right to make changes judged to be necessary.



**CLIP-ON STRAIGHT PLUG CRIMP TYPE**

**R120.065.500**

**CABLE 2/50 S**

Series : **DIN 41626**

**PACKAGING**

Standard	Unit	Other
<b>1</b>	-	<b>Contact us</b>

**SPECIFICATION**

**ELECTRICAL CHARACTERISTICS**

Impedance		<b>50</b> Ω
Frequency		<b>0-2</b> GHz
VSWR	<b>1.35</b> +	<b>0.000</b> x F(GHz) Maxi
Insertion loss		<b>NA</b> √F(GHz) dB Maxi
RF leakage	- (	<b>NA</b> - F(GHz)) dB Maxi
Voltage rating		<b>250</b> Veff Maxi
Dielectric withstanding voltage		<b>750</b> Veff mini
Insulation resistance		<b>5000</b> MΩ mini

**CABLE ASSEMBLY**

Stripping	a	b	c	d	e	f
mm	2.00	5.00	9.00	0.00	7.00	0.00

Assembly instruction :

Recommended cable(s)  
 RG 178  
 RG 196  
 RG 178 LC  
 KX 21

Characteristics indicated on this data sheet are those that can be achieved with the highest performance cable. Intrinsic limitations of the cable may diminish the performance of the assembly

Cable retention

- pull off **40** N mini  
 - torque **NA** N.cm

**MECHANICAL CHARACTERISTICS**

Center contact retention		
Axial force – Mating end	<b>10</b>	N mini
Axial force – Opposite end	<b>10</b>	N mini
Torque	<b>NA</b>	N.cm mini

**TOOLING**

Part Number	Description	Hexagon
.	.	.
R282.211.000	CRIMPING TOOL	2.67
R282.235.003	CRIMPING DIES	2.67
R282.293.000	CRIMPING TOOL	-

Recommended torque		
Mating	<b>NA</b>	N.cm
Panel nut	<b>NA</b>	N.cm
Clamp nut	<b>NA</b>	N.cm
A/F clamp nut	<b>0.000</b>	mm

Mating life	<b>100</b>	Cycles mini
Weight	<b>1.600</b>	g

**OTHERS CHARACTERISTICS**

**ENVIRONMENTAL**

Operating temperature	<b>-55/+155</b>	° C
Hermetic seal	<b>NA</b>	Atm.cm3/s
Panel leakage	<b>NA</b>	

Issue : **0344 B**

In the effort to improve our products, we reserve the right to make changes judged to be necessary.



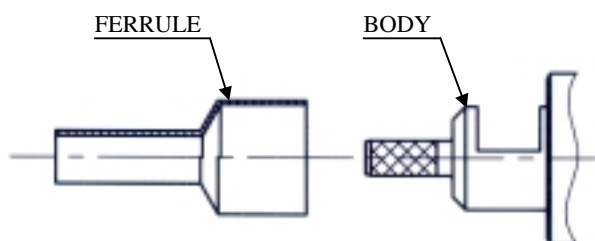
**CLIP-ON STRAIGHT PLUG CRIMP TYPE**

**R120.065.500**

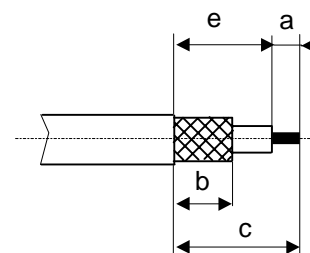
**CABLE 2/50 S**

Series : DIN 41626

**COMPONENTS**



**STRIPPING DIMENSIONS**

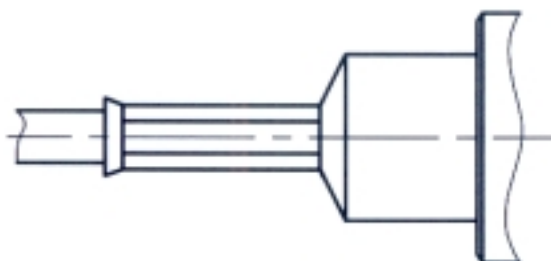


**1**



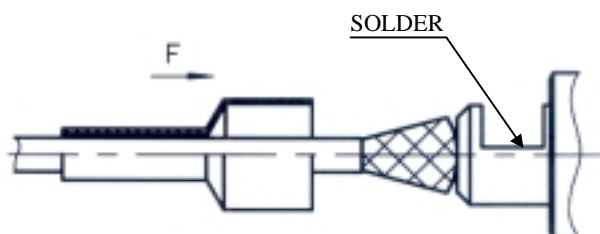
Slide the ferrule onto the cable.  
Strip the cable.

**3**



Crimp the ferrule with crimping tool (see connector TDS ).  
Cut the excess of braid if necessary.

**2**



Fan the braid.  
Push the connector body under the braid.  
Slide the center contact on until it bottoms against the cable dielectric.  
Solder the center contact.  
Push the connector body under the braid.  
Slide the ferrule over the braid in direction F.

**Issue : 0344 B**

In the effort to improve our products, we reserve the right to make changes judged to be necessary.

